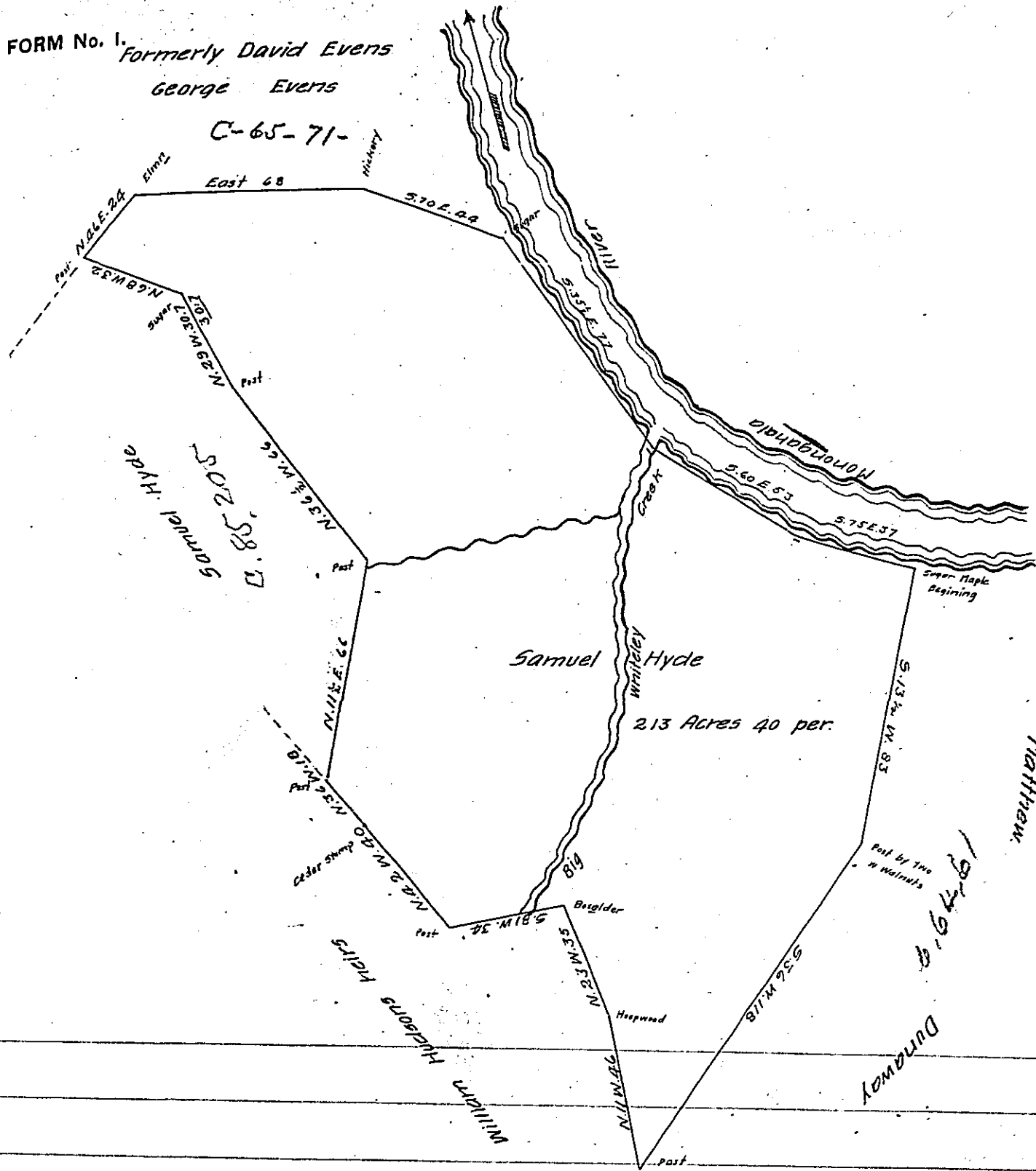


Formerly David Evens

George Evens

C-65-71-



The above is a Draught of a survey Made the 27 day of April 1812 containing 213½ Acres of land and allowance of Six per Cent & c. in pursuance of a Warrant granted Samuel Hyde Dated the 24 day of November 1789. Situate in Greene township on Big Whiteley Creek, called "Portsmouth."

Stephen Gaper D.S.

To Richard T. Leech Esq. S. G.

Pennsylvania

There is an actual Resident settlement on the above tract

Stephen Gaper

IN TESTIMONY that the above is a copy of the original remaining on file in the Department of Internal Affairs of Pennsylvania, made conformably to an Act of Assembly approved the 16th day of February, 1833, I have hereunto set my Hand and caused the Seal of said Department to be affixed at Harrisburg, this twenty eighth day of March 1905

Laurel P. ...
Secretary of Internal Affairs.